



CUBECOM
FULL SERVICE REALTY

CORY ROSEN*
SENIOR VICE PRESIDENT
(416) 523-7749
CROSEN@CUBECOM.CA

COOPER BLUME
SALES REPRESENTATIVE
(416) 566-8217
CBLUME@CUBECOM.CA

1025 LAKE SHORE

BLVD EAST, TORONTO



Cubecom Commercial Realty Inc. Brokerage. The contents of this package are based on the information furnished by principals and sources which we deem reliable, but for which we can assume no responsibility, which may change at any time.



PROPERTY DETAILS

- Exciting retail opportunity in Toronto at Lake Shore Blvd East, and Leslie Street just south of Leslieville.
- Join tenants such as Canadian Tire, Farm Boy, LCBO, Shoppers Drug Mart, Mark's Work Warehouse, The Brick, and more.
- The site benefits from ample parking and convenient access from the Don Valley Parkway, The Gardiner Expressway, and Downtown Toronto.
- Services a market with household income levels in excess of \$122,000, far exceeding the national average.
- Excellent exposure to Lake Shore Blvd.
- Pylon signage opportunity.



DEMOGRAPHICS



POPULATION

0-2KM 67,566
 0-5KM 443,866
 0-10 KM 1,703,834



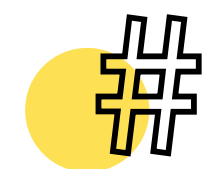
DAYTIME POPULATION

0-2KM 61,274
 0-5KM 348,885
 0-10KM 1,886,289



AVG. HOUSEHOLD INCOME

0-2KM \$80,713
 0-5KM \$122,172
 0-10KM \$127,439

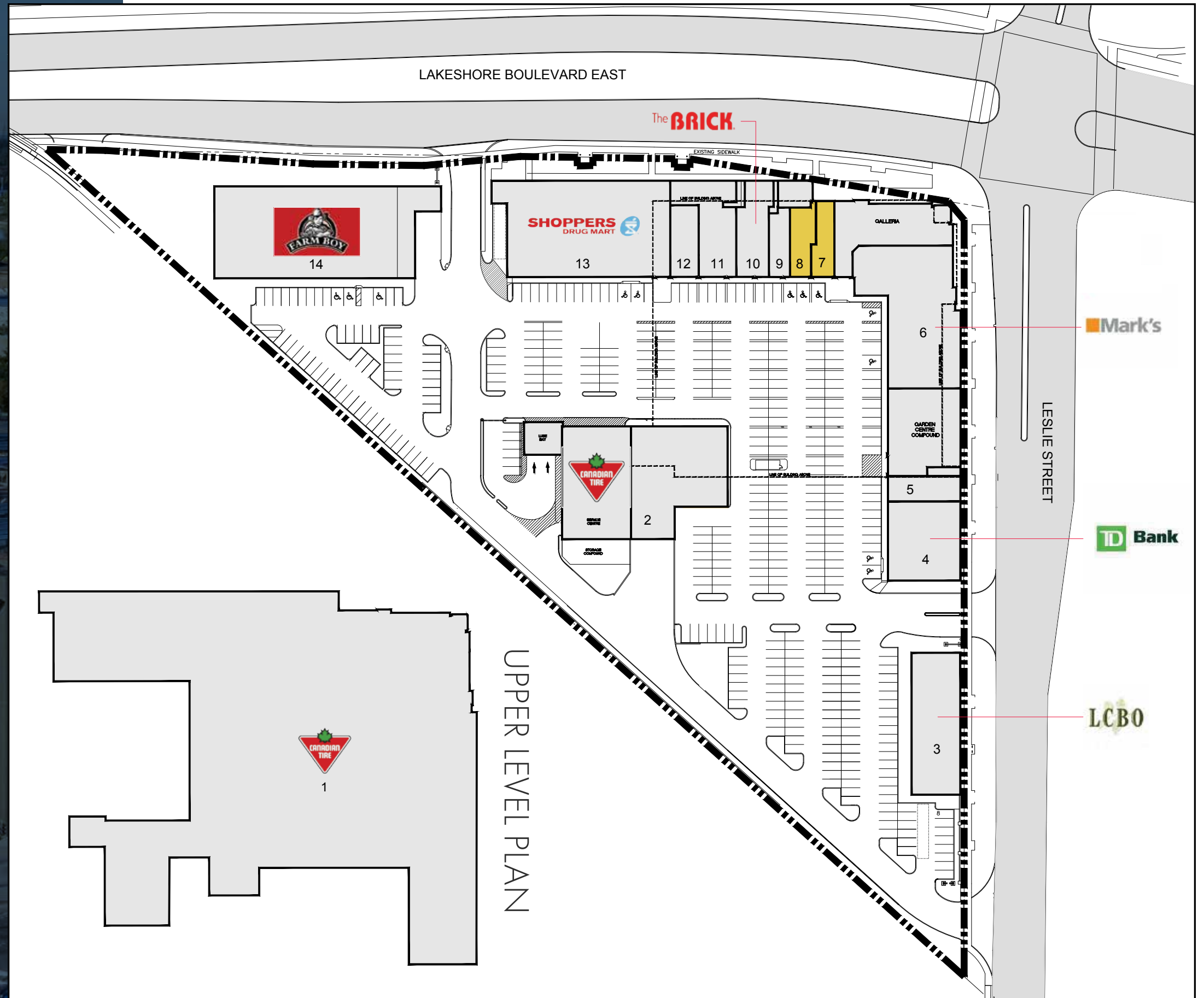


MEDIAN AGE

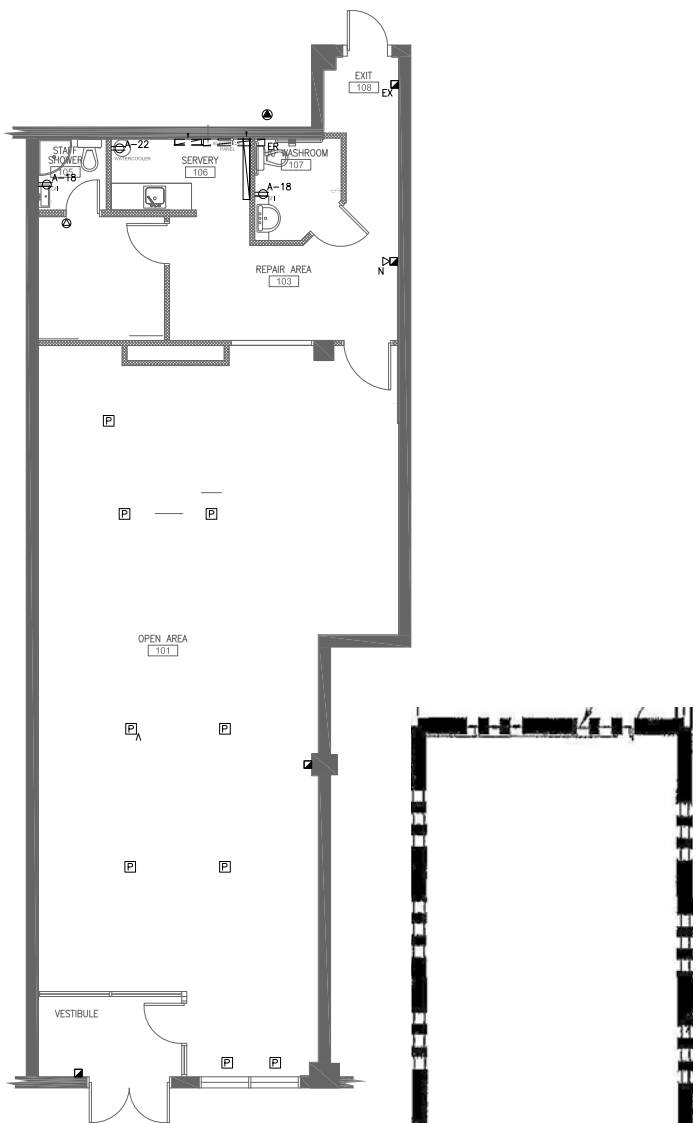
0-2KM 41.2
 0-5KM 39.9
 0-10KM 38.5

SITE PLAN

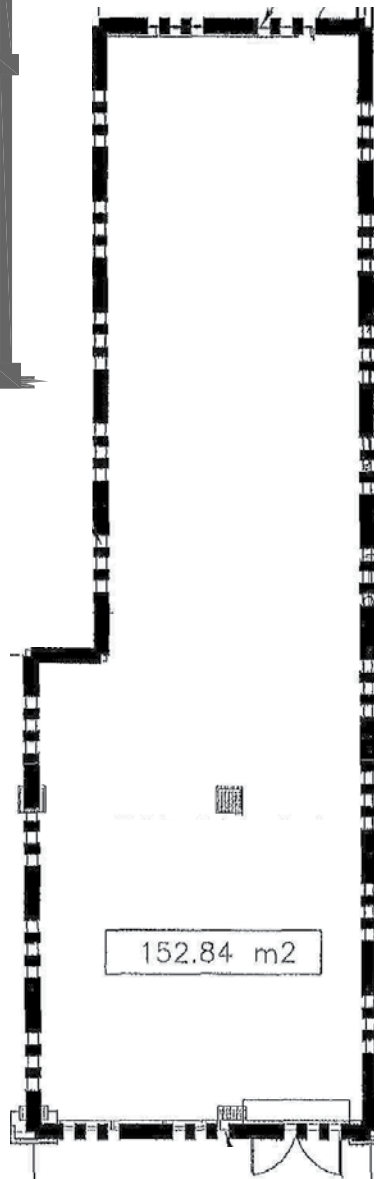
- 1 CANADIAN TIRE
- 2 CANADIAN TIRE SERVICE CENTRE
- 3 LCBO
- 4 TD BANK
- 5 PEDI N NAILS
- 6 MARK'S
- 7 AVAILABLE
- 8 AVAILABLE
- 9 PEARLE VISION
- 10 THE BRICK MATTRESS
- 11 FIKA
- 12 CLUB PILATES
- 13 SHOPPERS DRUG MART
- 14 FARM BOY



FLOOR PLAN | UNIT 108



FLOOR PLAN | UNIT 107



UNIT DETAILS

UNIT 8:
APPROX. 1,778 SF

UNIT 7:
APPROX. 1,645 SF

UNIT 7 & 8 CAN BE COMBINED FOR A
TOTAL OF APPROX. 3,423 SF

STARTING NET RENT:
CONTACT LISTING BROKER

ESTIMATED TMI:
\$14.40 PER SF





CUBECOM
FULL SERVICE REALTY

CUBECOM COMMERCIAL REALTY INC. BROKERAGE.
#101-212 KING ST W, TORONTO, ON, M5H 1K5 | CUBECOM.CA

The contents of this package are based on the information furnished by principals and sources which we deem reliable, but for which we can assume no responsibility, which may change at any time. *Sales Representative



CORY ROSEN*
Senior Vice President
(416) 523-7749
crosen@cubecom.ca

COOPER BLUME
Sales Representative
(416) 566-8217
cblume@cubecom.ca