



CORY ROSEN*
SENIOR VICE PRESIDENT
(416) 523-7749
CROSEN@CUBECOM.CA

COOPER BLUME
SALES REPRESENTATIVE
(416) 566-8217
CBLUME@CUBECOM.CA

239 SCARLETT RD TORONTO, ON



CUBECOM
FULL SERVICE REALTY

CUBECOM COMMERCIAL REALTY INC. BROKERAGE | #101-212 KING ST W, TORONTO, ON, M5H 1K5 | CUBECOM.CA
Cubecom Commercial Realty Inc. Brokerage. The contents of this package are based on the information furnished by principals and sources which we deem reliable, but for which we can assume no responsibility, which may change at any time. * Sales Representative

PROPERTY OVERVIEW

Fantastic opportunity to lease a remarkable, freestanding CORNER retail space located in Toronto. The unit spans 1,483 sq.ft. and boasts ample parking, as well as huge pylon signage for excellent visibility and access. With the added benefit of branding your own building, this opportunity is perfect for a variety of retail, service, medical, and food/restaurant concepts.

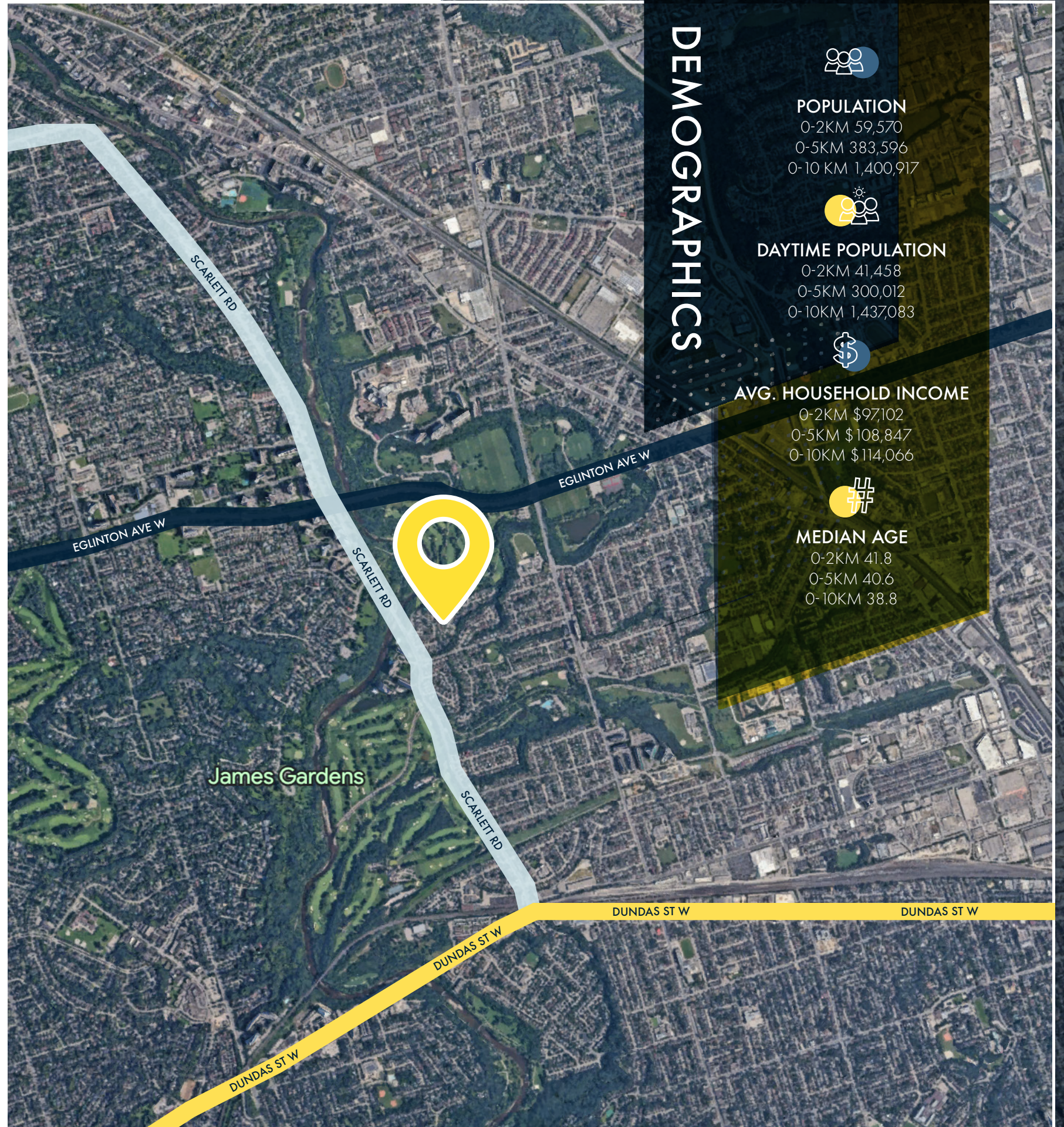
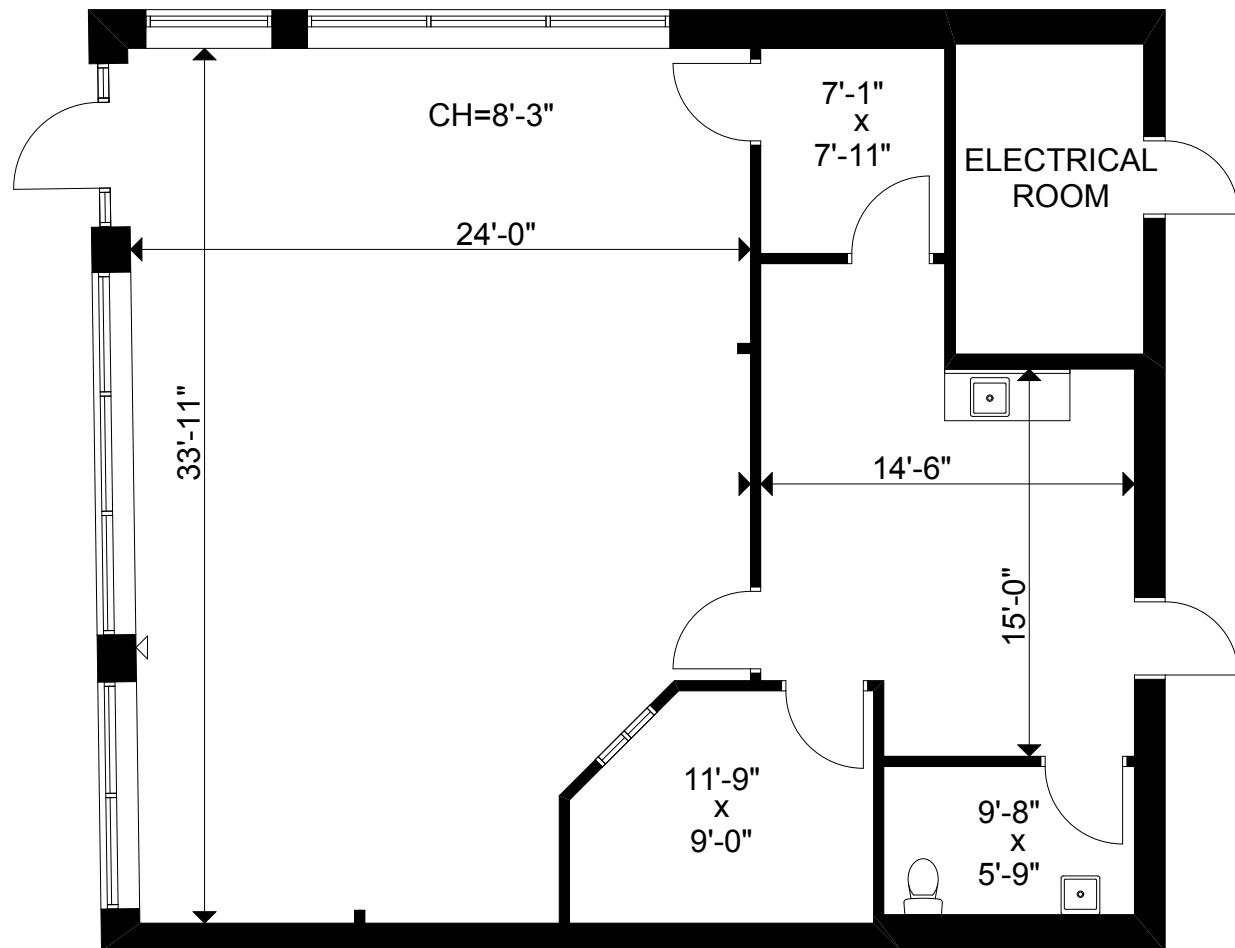
UNIT DETAILS

AREA: 1,512SF

NET RENT: Contact Listing Broker

TMI: \$18.00 per SF. (Estimated 2023)

FLOOR PLAN



DEMOGRAPHICS



POPULATION
0-2KM 59,570
0-5KM 383,596
0-10 KM 1,400,917



DAYTIME POPULATION
0-2KM 41,458
0-5KM 300,012
0-10KM 1,437,083



AVG. HOUSEHOLD INCOME
0-2KM \$97,102
0-5KM \$108,847
0-10KM \$114,066



MEDIAN AGE
0-2KM 41.8
0-5KM 40.6
0-10KM 38.8



CUBECOM
FULL SERVICE REALTY

CORY ROSEN*

Senior Vice President

(416) 523-7749

crosen@cubecom.ca

COOPER BLUME

Sales Representative

(416) 566-8217

cblume@cubecom.ca



CUBECOM COMMERCIAL REALTY INC. BROKERAGE.
#101-212 KING ST W, TORONTO, ON, M5H 1K5 | CUBECOM.CA

The contents of this package are based on the information furnished by principals and sources which we deem reliable, but for which we can assume no responsibility, which may change at any time. *Sales Representative